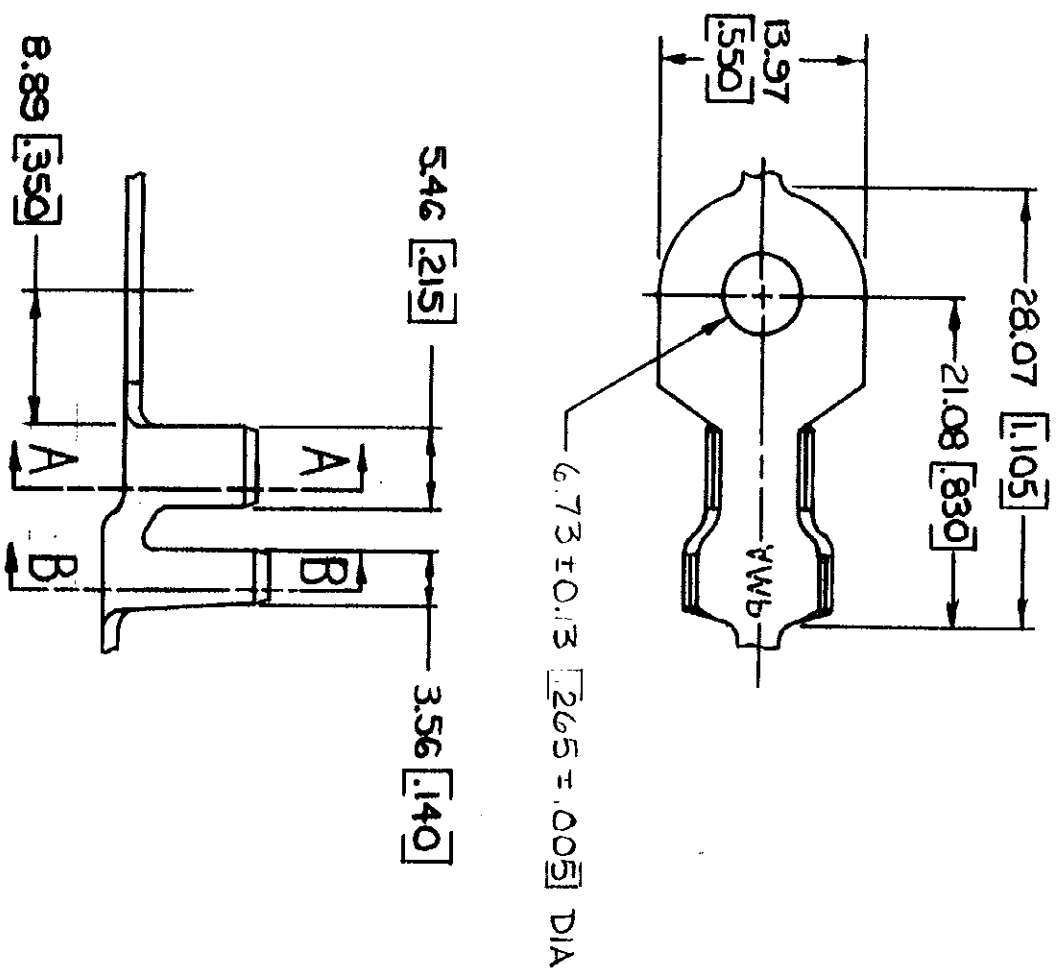
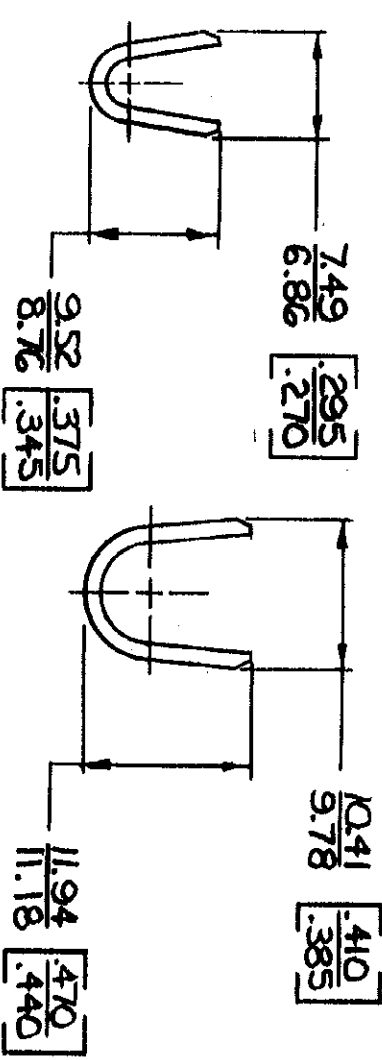


© COPYRIGHT 1964 BY AMP INCORPORATED, HARRISBURG, PA.
 ALL INTERNATIONAL RIGHTS RESERVED. AMP INCORPORATED PRODUCTS
 COVERED BY U. S. AND FOREIGN PATENTS AND/OR PATENTS PENDING.



1. CONTINUOUS STRIP ON REELS.
 2. DIMENSIONS IN BRACKETS ARE IN INCHES.

REVISIONS		DATE	APPROVED
P	ZONE		
F	LTR		
J	REDRAWN & REVISED	A-3943	4/22/78 DC
			55



STUD SIZE	INSULATION RANGE	WIRE RANGE	FINISH	MATERIAL	PART NO
M ₆ 4	5.59 - 8.00 [.220 - .315]	5.0 - 8.5 mm ² [10 - 8]	TIN	1.27 [050] COPPER	41809

UNLESS OTHERWISE SPECIFIED DIMENSIONS ARE IN MILLIMETERS. TOLERANCES ON DECIMALS TO: .38 [0.15] ANGLES 45°

CONTRACT NO. *David D. Wood 4/22/78*
 DFR *David D. Wood 4/22/78*
 CHK *J. J. ... 7/19/78*
 APPR *David D. Wood 8-1-78*
 APPR *G. Kelly 8-1-78*

NAME: RING
 AMP INCORPORATED Harrisburg, Pa.

FINISH: SEE TABLE
 OTHER APPR: _____

SIZE: B
 CODE IDENT NO: 00779
 DRAWING NO: 41809
 SCALE: 1:1 SHEET: _____

METRIC