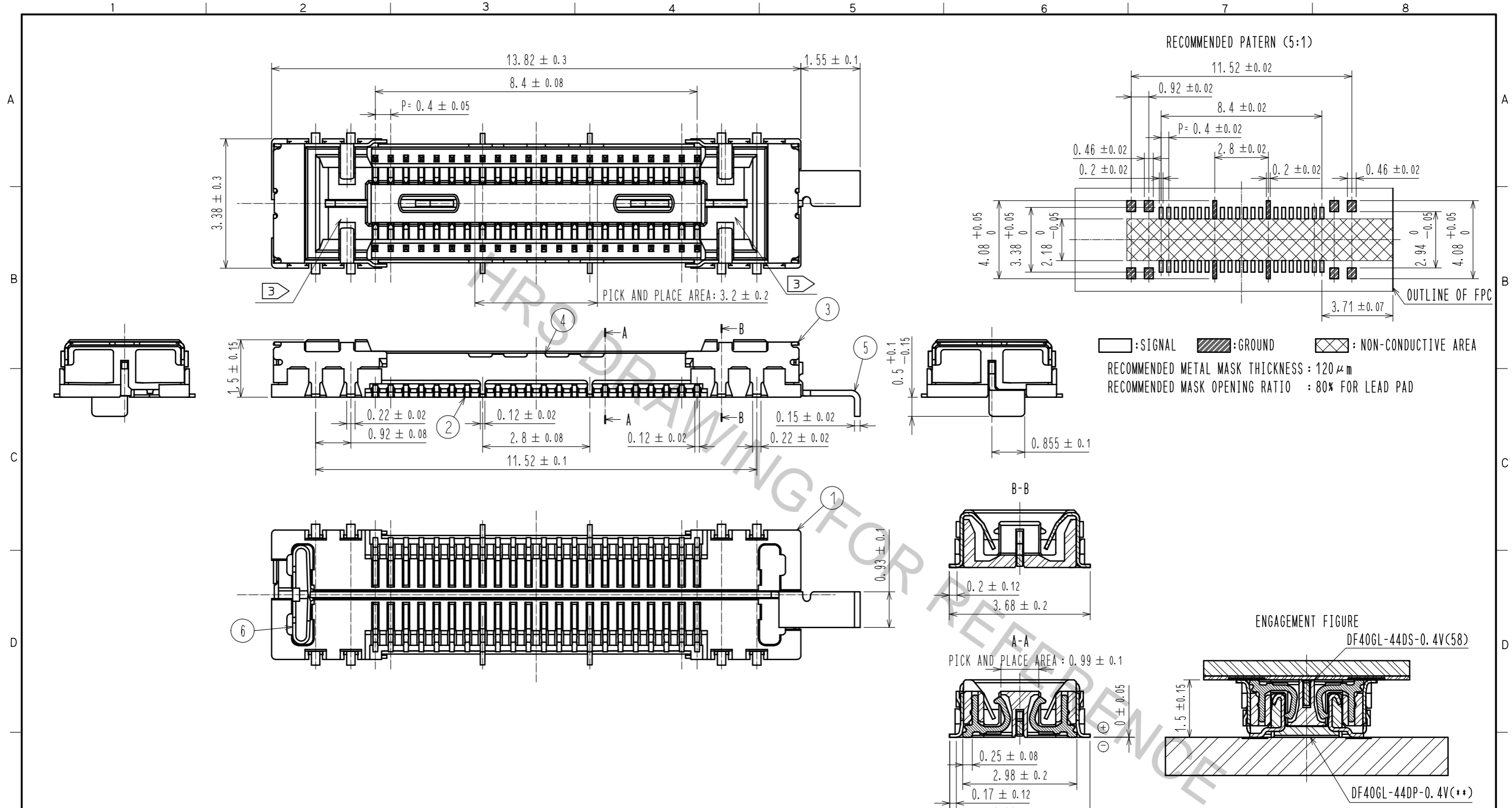
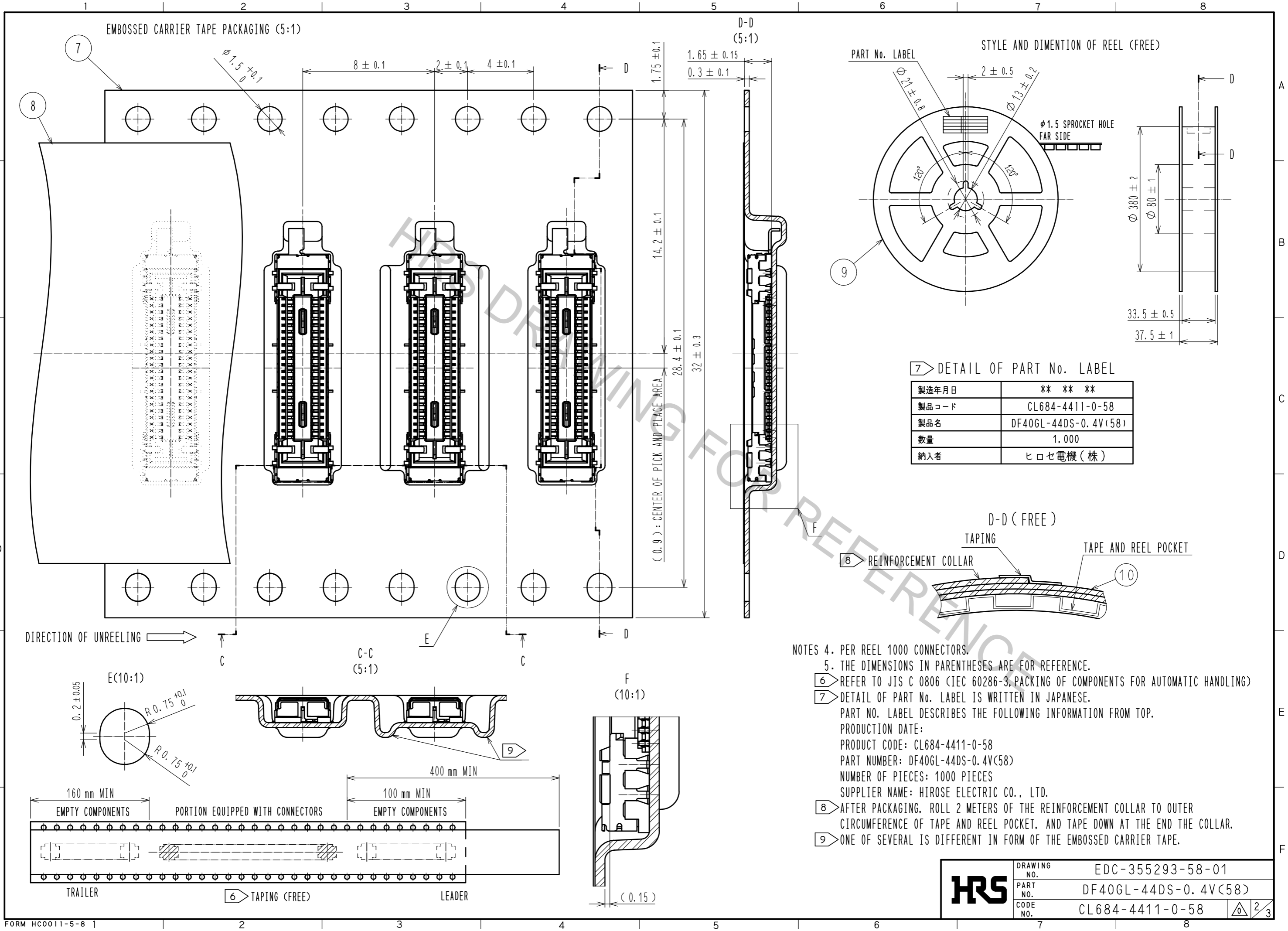


Apr.1.2017 Copyright 2017 HIROSE ELECTRIC CO., LTD. All Rights Reserved.



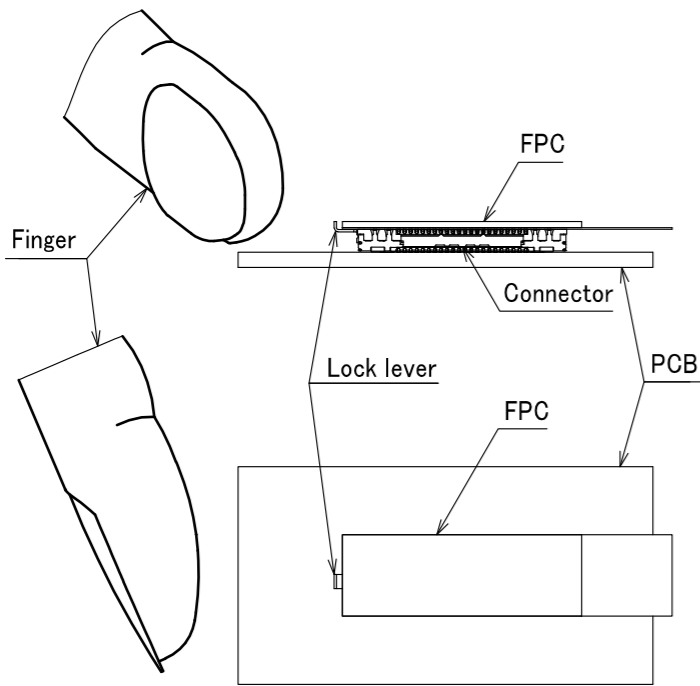
- NOTES
1. ALL LEAD CO-PLANARITY SHALL BE 0.1mm MAX.
 2. PLATING SPECIFICATIONS
 CONTACT AREA : GOLD 0.05 μm MIN
 SMT LEAD : GOLD 0.05 μm MIN
 UNDER PLATING : NICKEL 1 μm MIN
 (SURFACE : SEALING)
 3. HRS MARK AND CAV No. ARE INDICATED IN APPROX POSITION SHOWN.

5	STAINLESS STEEL		10	PS	CLEAR(REINFORCEMENT COLLAR)
4	PHOSPHOR BRONZE	2	9	PS	BLACK(PLASTIC REEL)
3	PHOSPHOR BRONZE	2	8	POLYESTER	CLEAR(COVER TAPE)
2	PHOSPHOR BRONZE	2	7	PS	CLEAR(EMBOSSED CARRIER TAPE)
1	LCP	BLACK, UL94 V-0	6	STAINLESS STEEL	
NO.	MATERIAL	FINISH . REMARKS	NO.	MATERIAL	FINISH . REMARKS
UNITS mm		SCALE 10 : 1	COUNT	DESCRIPTION OF REVISIONS	
DESIGNED		CHECKED		DATE	
APPROVED : MO. ISHIDA			15.07.28	DRAWING NO. EDC-355293-58-01	
CHECKED : WR. FUKUCHI			15.07.28	PART NO. DF40GL-44DS-0.4V(58)	
DESIGNED : SJ. WADA			15.07.27	CODE NO. CL684-4411-0-58	
DRAWN : KR. AJITO			15.07.27	1/3	

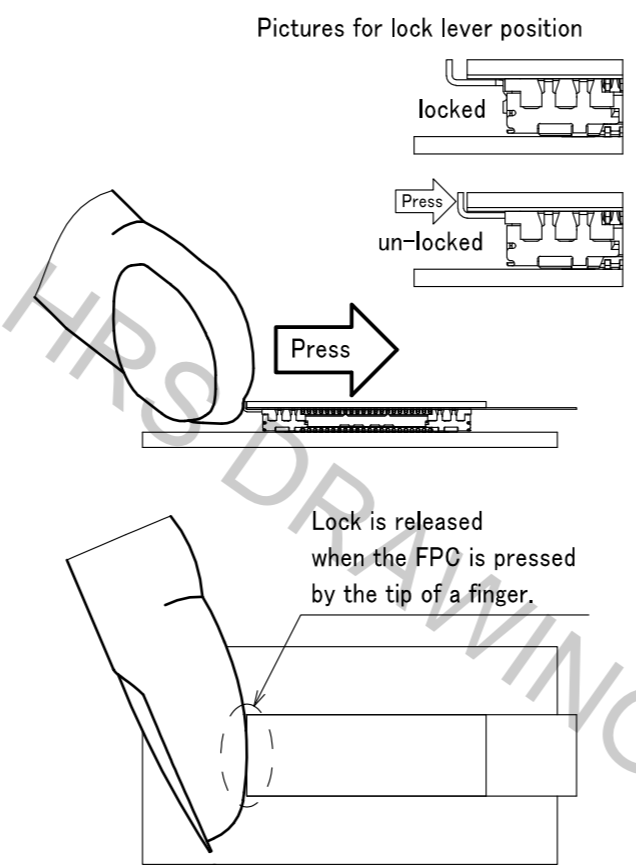


HRS	DRAWING NO.	EDC-355293-58-01
	PART NO.	DF40GL-44DS-0.4V(58)
	CODE NO.	CL684-4411-0-58
		2/3

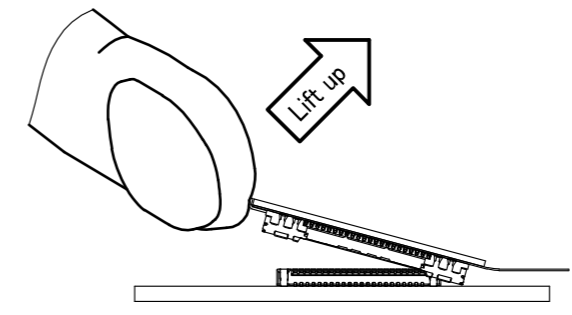
Handling Instruction



STEP 1 Press the lever to release the lock

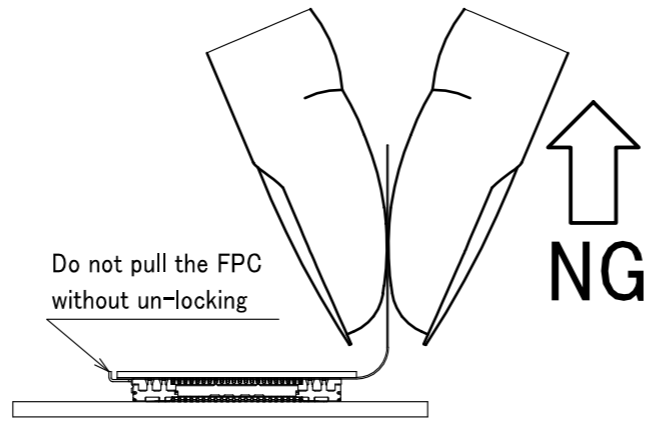
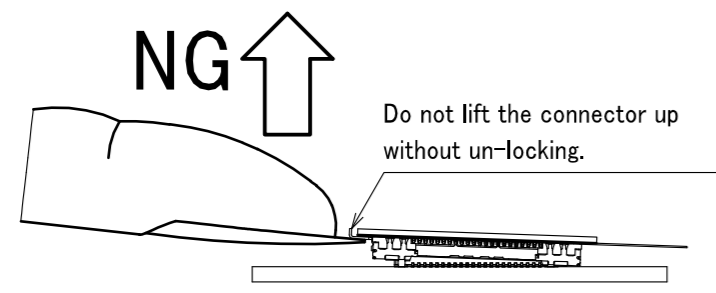


STEP 2 While maintaining the unlocked position, lift the FPC up in the direction shown on illustration.

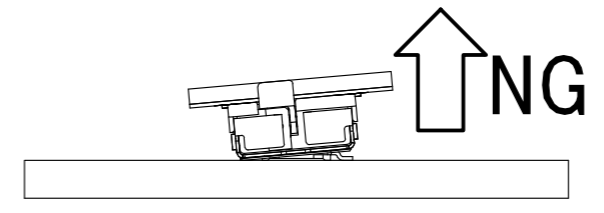


Precaution

Do not attempt to un-mate without un-locking since there is a risk for connector breakage when un-mated without releasing the lock.



Do not un-mate in the depth direction to avoid contact or housing damage even when the lock is released.



HRS	DRAWING NO.	EDC-355293-58-01
	PART NO.	DF40GL-44DS-0.4V(58)
	CODE NO.	CL684-4411-0-58
		3/3